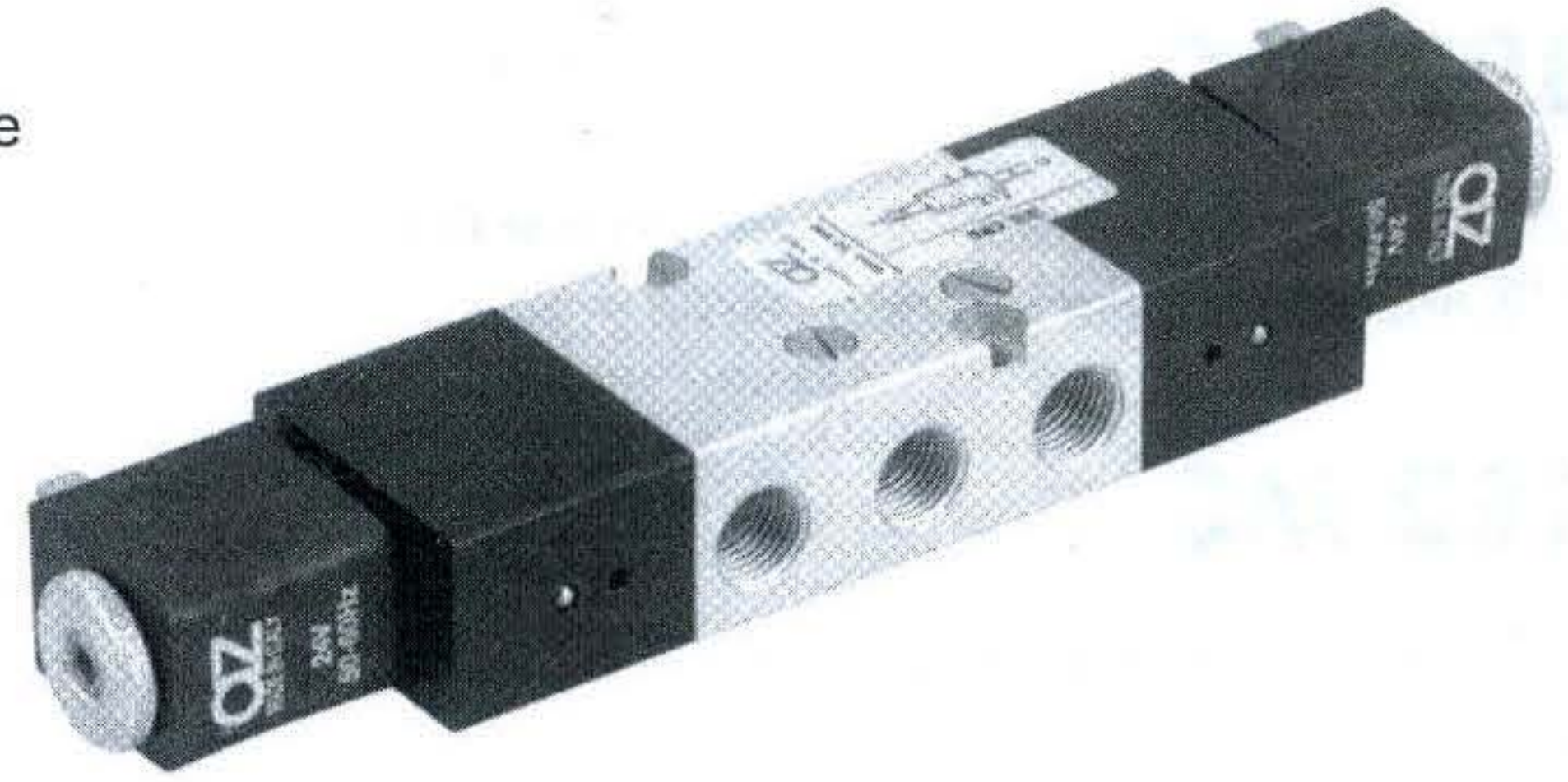


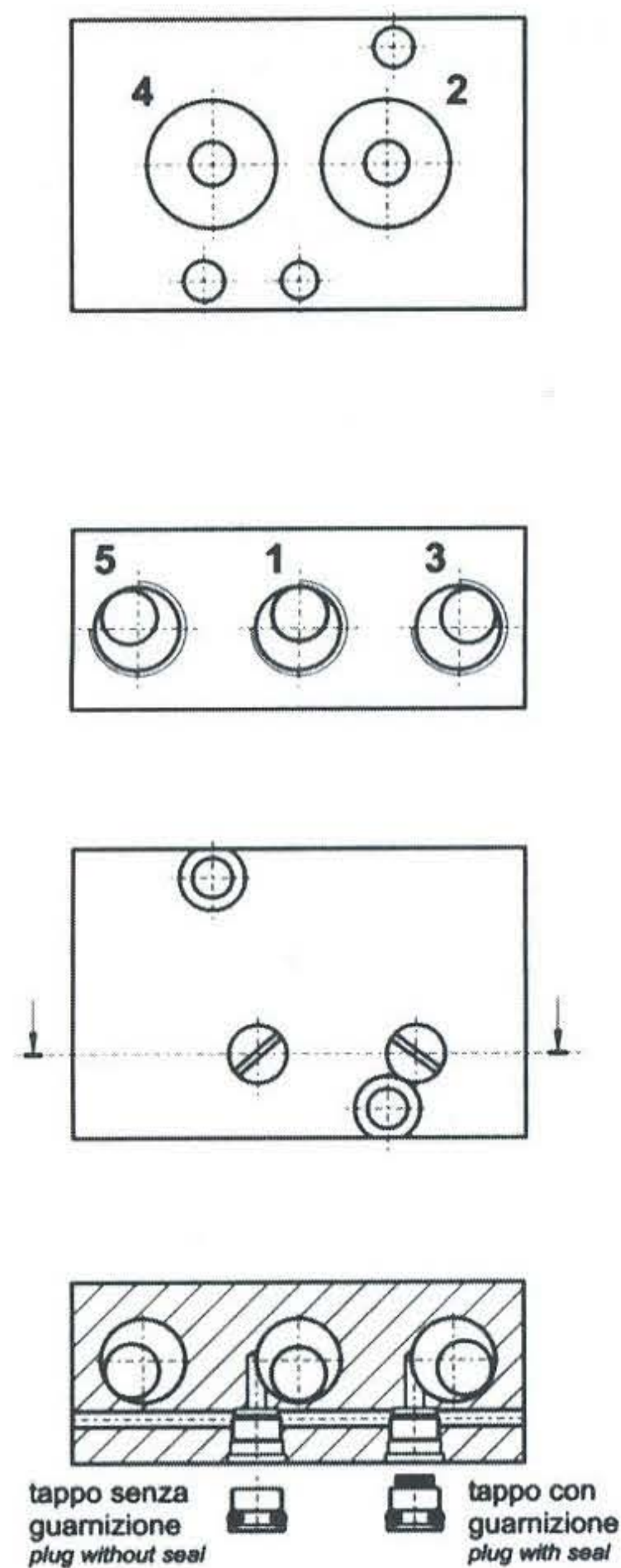
La funzione della valvola può essere variata in qualsiasi momento, secondo lo schema qui riportato, cambiando di posto la guarnizione collocata sotto a uno dei due tappi avvitati nel corpo.

The function of the valve can be changed by repositioning the seal situated under one of the two plugs.

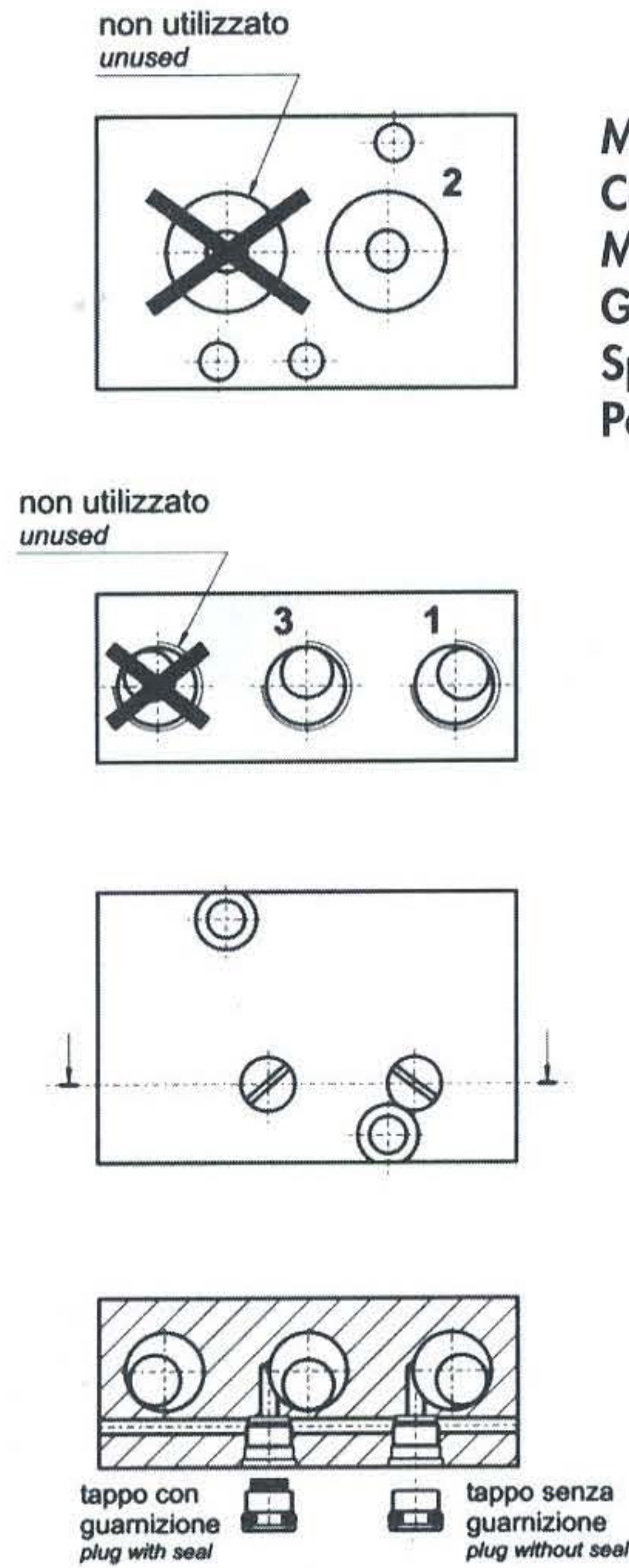


**Versione ATEX II 2GD cII T6  
su richiesta**

### 5 VIE - 5 WAYS



### 3 VIE - 3 WAYS

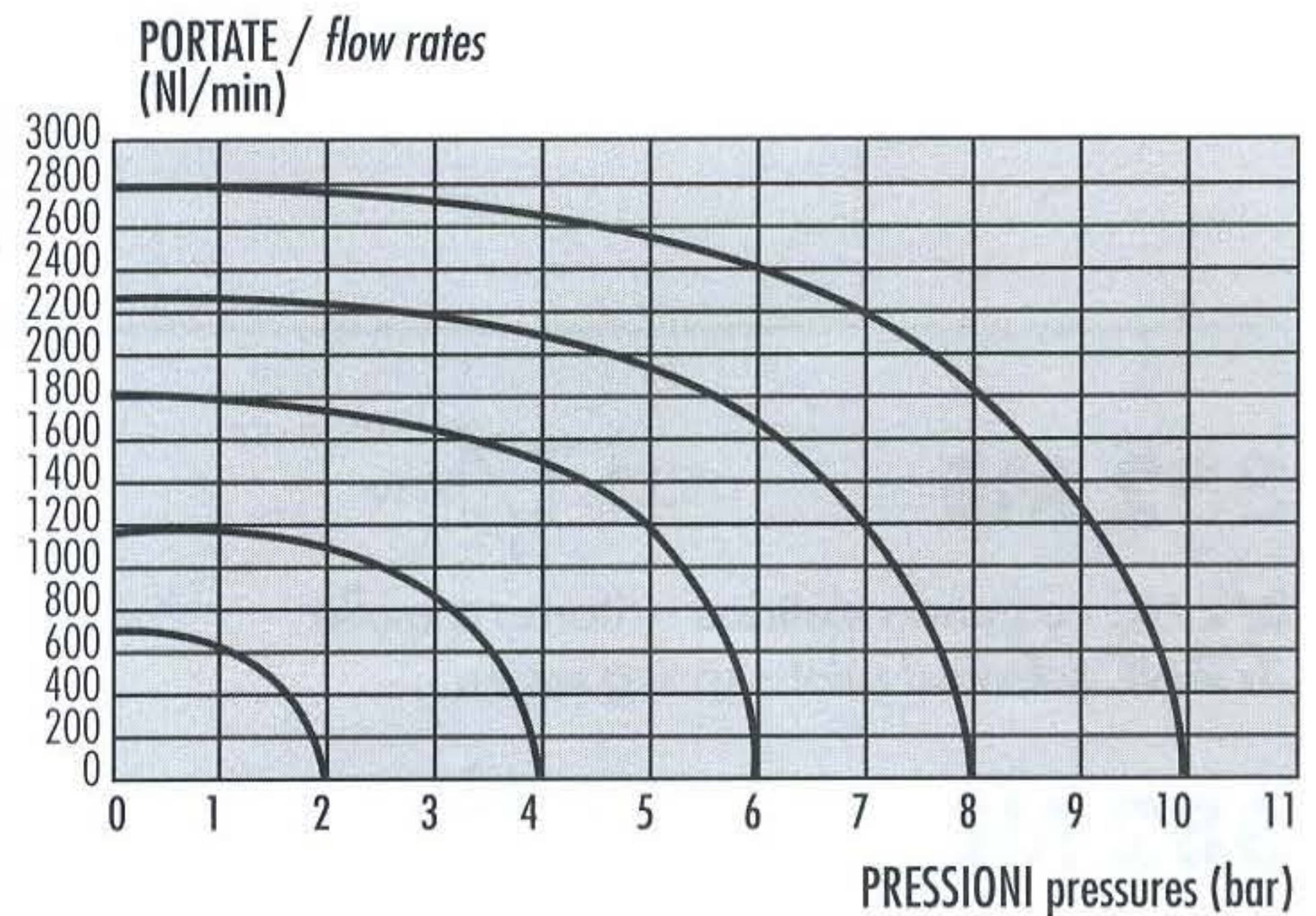


**Materiali**  
**Corpo:** alluminio 11S  
**Molla:** INOX  
**Guarnizioni:** NBR  
**Spola:** alluminio nichelato  
**Parti interne:** ottone OT58

**Materials**  
**Body:** aluminium 11S  
**Spring:** stainless steel  
**Seals:** NBR  
**Spool:** nickel plated aluminium  
**Internal parts:** brass OT58

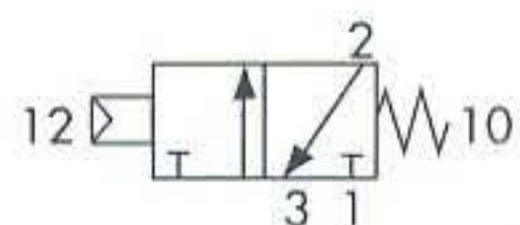
I prodotti di seguito indicati sono venduti senza bobine, da acquistarsi separatamente.

The following listed products are sold without coils, which are bought separately.



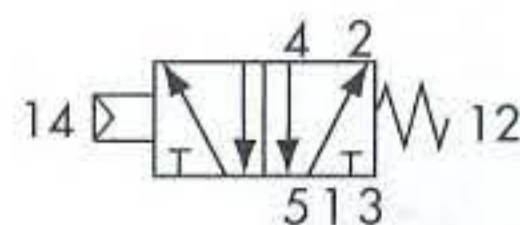
Diametro nominale <i>Nominal orifice</i>		7.5 mm		
Attacchi <i>Ports</i>		G1/4"		
Temperatura di esercizio <i>Temperature range</i>		max + 60°C		
Pressione di esercizio <i>Working pressure</i>	el. monost. ( <i>electr. monost.</i> )	el. bistabile ( <i>electr. bi-stable</i> )	pn. monost. ( <i>pneum monost.</i> )	pn. bistabile ( <i>pneum bi-stable</i> )
	2.5 ... 10 bar 0.25 ... 1 MPa	1 ... 10 bar 0.1 ... 1 MPa	0 ... 10 bar 0 ... 1 MPa	0 ... 10 bar 0 ... 1 MPa
Pressione di comando <i>Actuating pressure</i>			pn. monost. ( <i>pneum monost.</i> )	pn. bistabile ( <i>pneum bi-stable</i> )
			2.5 ... 10 bar 0.25 ... 1 MPa	1 ... 10 bar 0.1 ... 1 MPa
Fluido <i>Fluid</i>		Aria filtrata 50µ con o senza lubrificazione 50µ filtered, lubricated or non lubricated air		

## 382 MC

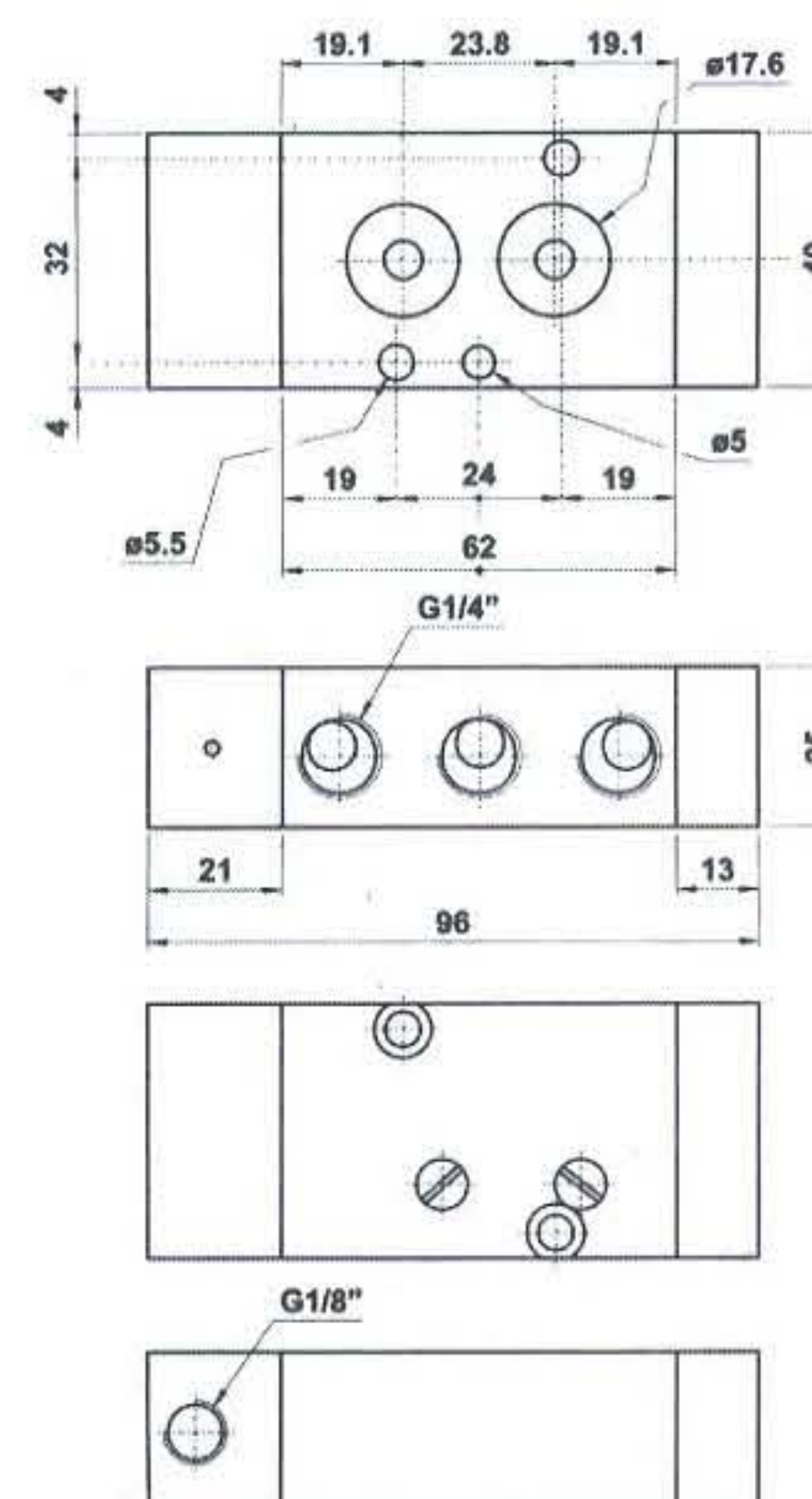
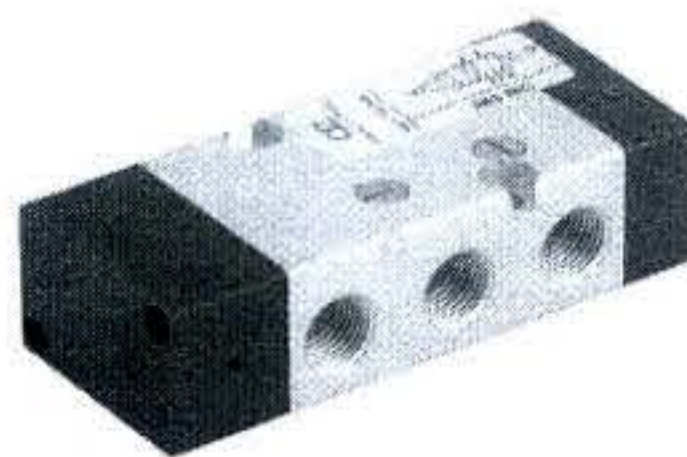


3/2 comando pneumatico - ritorno a molla  
3/2 *pneumatic pilot - spring return*

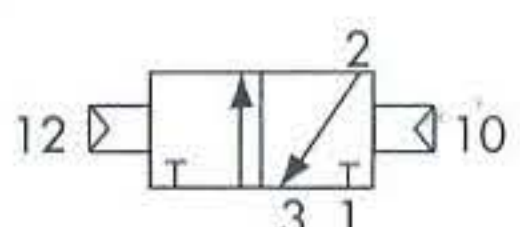
## 582 MC



5/2 comando pneumatico - ritorno a molla  
5/2 *pneumatic pilot - spring return*

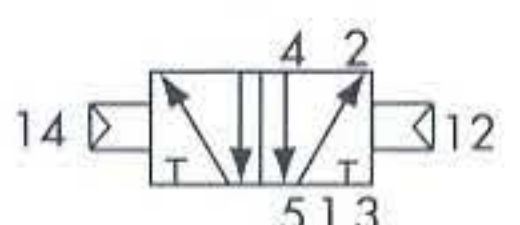


## 382 CC

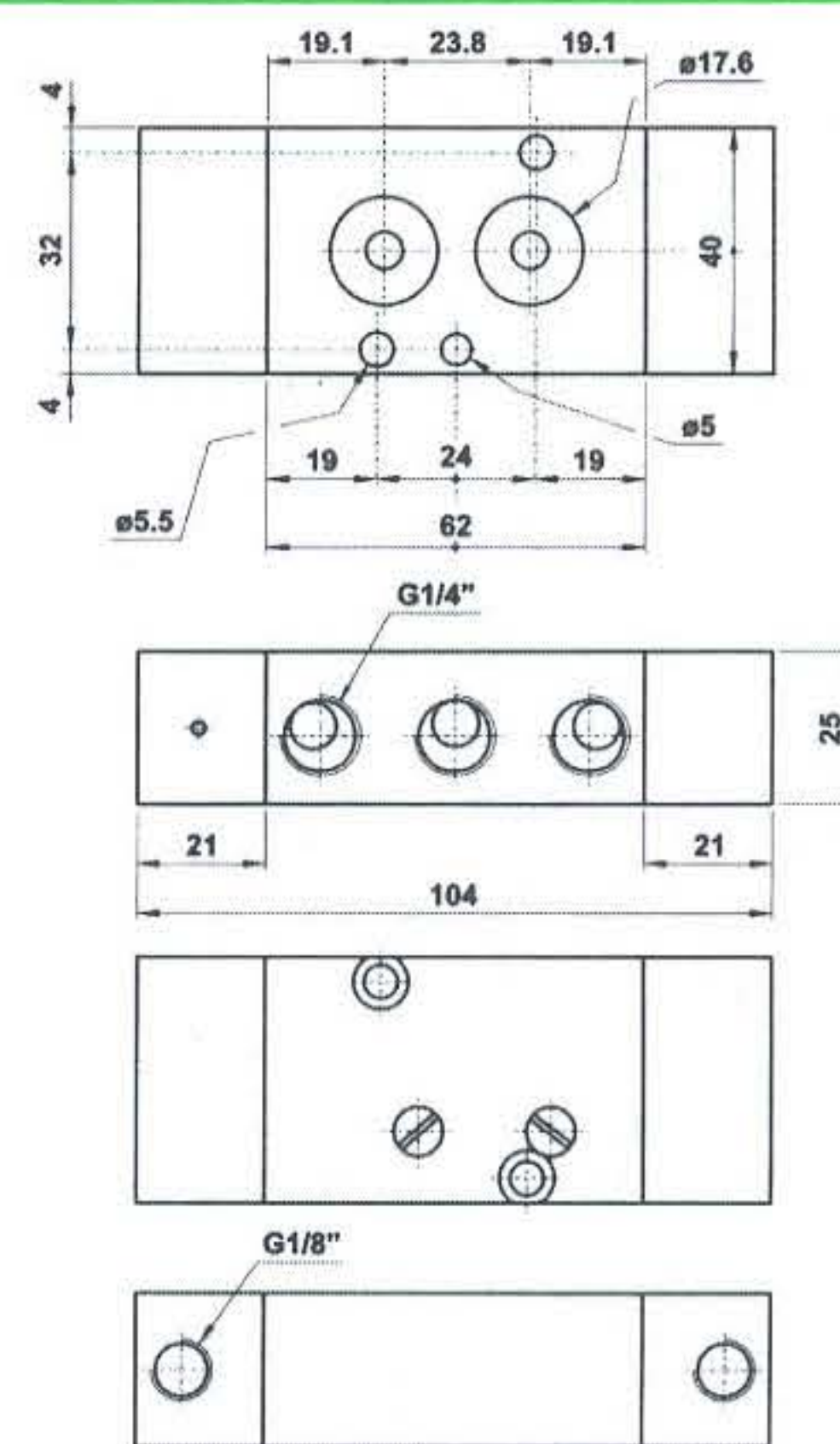
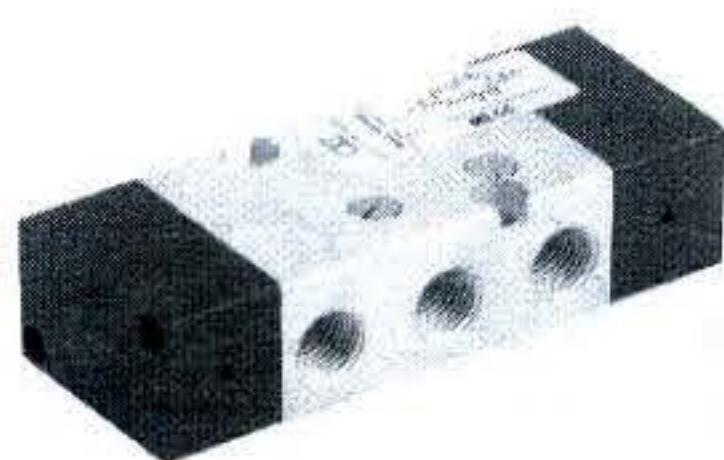


3/2 doppio comando pneumatico  
3/2 *double pneumatic pilot*

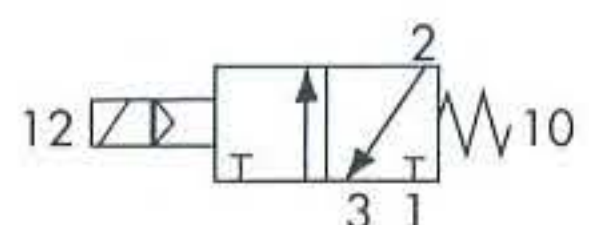
## 582 CC



5/2 doppio comando pneumatico  
5/2 *double pneumatic pilot*

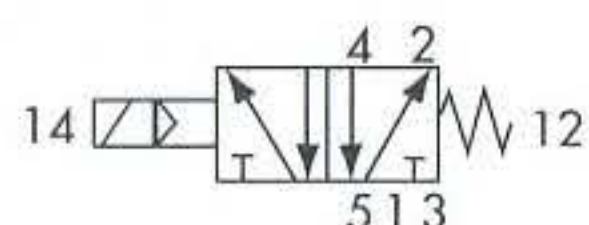


## 382 ME

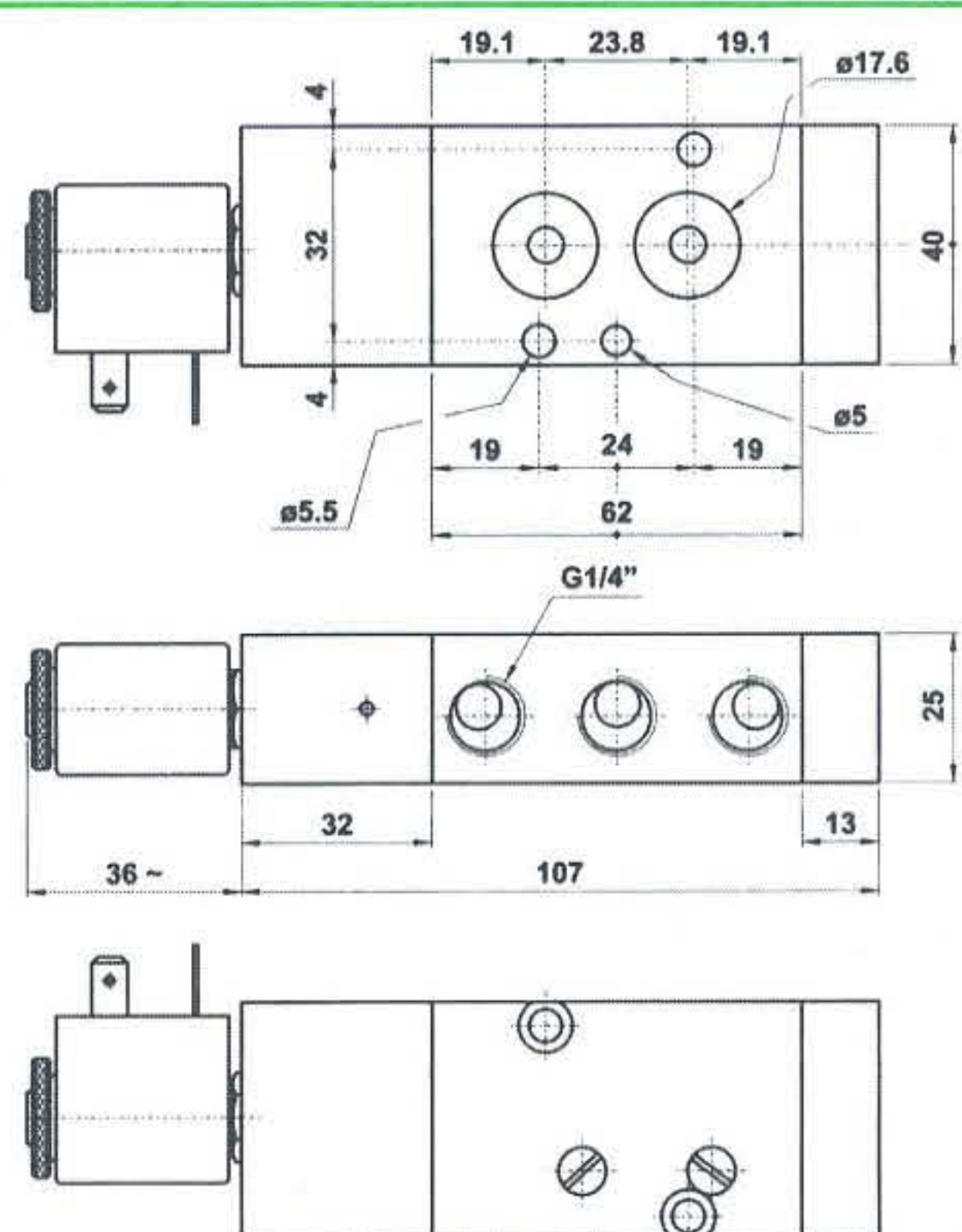


3/2 NC comando elettrico - ritorno a molla  
3/2 NC *solenoid pilot - spring return*

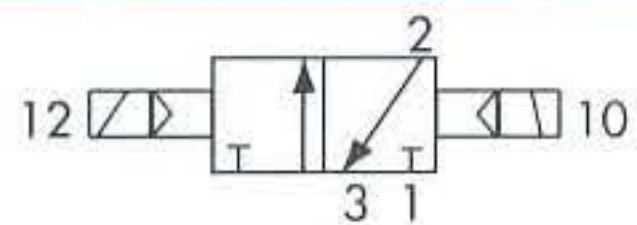
## 582 ME



5/2 comando elettrico - ritorno a molla  
5/2 *solenoid pilot - spring return*

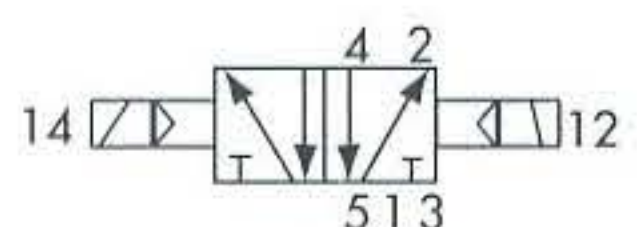


## 382 EE



3/2 doppio comando elettrico  
3/2 *double solenoid pilot*

## 582 EE



5/2 doppio comando elettrico  
5/2 *double solenoid pilot*

